



# 34<sup>th</sup> BIG HORSE CREEK BARRA CLASSIC 2022

29TH APRIL – 1ST MAY

Victoria River via  
Timber Creek

ROD & RIFLE  
TACKLE  
**WORLD**  
KATHERINE

KATHERINE GAME FISHING CLUB  
NORTHERN TERRITORY

# **ROD & RIFLE TACKLE WORLD**

## **KATHERINE**

Rod & Rifle Tackleworld is locally owned and operated, it has been serving the Katherine Community for over 40 years!

We live and breath fishing and the outdoors so you can be sure you're getting the right advice first time, every time.

With the largest range of fishing, camping and hunting gear in Katherine you can't go wrong.

**Drop in and check out our range!**



# CONTENTS

Nomination Costs/Categories	4
Program of Events	5 & 6
Location/Boat Ramp	7
Accommodation/Fuel/Meals	7
Nomination and Competition Bag Collection	8
All Prize Categories	9 & 10
Fishing Rules	11-13
Fishing Times/Competition Area	14
Our Sponsors	15-23
Photographing Fish	24
Safety Equipment list	25
Map	26



## NOMINATION COSTS

Senior	\$150
Junior	\$50
Poddy Mullet	\$50
Family ( <i>2 Seniors, 2 Juniors/Poddy Mullet</i> )	\$350
Additional Children	\$30 pc

## AGE CATEGORIES

Senior Age Category	17 yrs+
Junior Age Category	7 yrs—16 yrs
Poddy Mullet Age Category	0—6 yrs

Please note that for Juniors to be eligible to win either of the Major Prizes they must be nominated as a Senior.

Nominations will be accepted at Timber Creek Hotel on Friday, 29th April up until 8:00pm

**No nominations will be accepted after 8pm Friday, 29th April**  
**Nominations will not be accepted at Big Horse Creek boat ramp**

**EFTPOS—Available**

**Nominations & Payment to**

KGFC PO Box 190 Katherine 0851

**Contact:** Harry Renfree 0408 187 034 [katherinegamefishingclub@gmail.com](mailto:katherinegamefishingclub@gmail.com)

## PROGRAM OF EVENTS

### FRIDAY 29TH APRIL

#### Registration and Competition Bag Collection

All competitors must register and collect their information kit

3.00 - 8:00pm

#### Dinner at Timber Creek Hotel

BYO Alcohol

From 6.30pm

### SATURDAY 30TH APRIL

#### LINES IN



#### Breakfast BBQ at the BOAT RAMP

Provided by *Katherine High School*

Bacon & egg sandwiches - \$5.00 Tea & Coffee available

6:00am

4:00am - 9:00am

#### Weigh Master

Available for catch verification photos

5:00pm - 7:00pm

#### Dinner at Timber Creek Hotel

BYO Alcohol

From 6.30pm



# PROGRAM OF EVENTS

## SUNDAY 1ST MAY

### Breakfast BBQ at the BOAT RAMP

Provided by *Katherine High School*

Bacon & egg sandwiches - \$5.00 Tea & Coffee - available

4:00am - 9:00am

### LINES OUT



### Weigh Master

Available for catch verification photos (5:00pm cut off!!)

3.00pm

3:00pm - 5:00pm

### PRESENTATION DINNER

2 course meal provided for all registered competitors

**(Extra meals \$35.00 adult \$17.00 child)**

*Entrants will be required to present their lanyard card to obtain their meal—  
this ticket will then go into lucky door prize draw*

6:00PM - 7:00PM

### PRESENTATION CEREMONY

7:00pm till late

*Including;*

- *Category prizes*
- *Early nomination draw*
- *Lucky Door Prize*
- *And other raffle draws*

**1st Prize:** Mercury 20hp Outboard motor valued at \$4999  
**2nd prize:** Humminbird Helix 10 Chirp MSI+ GPS G4N valued at \$3099  
**3rd Prize:** Engle Fridge 38L Eclipse MR40F with travel case valued at \$1080  
**4th Prize:** Longest Barramundi (male)  
**5th Prize:** 4 x \$250 vouchers to Katherine Toyota valued at \$1000  
**6th Prize:** Yeti Gift Pack Valued at \$580



## LOCATION

The competition is based at the Timber Creek Hotel.

Timber Creek is a small town located on the Victoria Highway 285kms West of Katherine and 193 East of the NT/WA border.

## BOAT RAMP

The boat ramp is located at Big Horse Creek—8kms West of Timber Creek within the Gregory National Park and is accessible at all times and tides.

Competitors are requested to have boats ready to launch when approaching the boat ramp.

Trailers are NOT to be left on the ramp—Please be considerate of other users.

Parking available opposite turn off to boat ramp.

## ACCOMMODATION/FUEL/MEALS

Accommodation available at **Timber Creek Hotel**;

Motel units, cabins demountable units and caravan/camping facilities.

Booking inquiries—08 8975 0722

Many thanks to **Timber Creek Hotel** for providing a 10% discount on motel or caravan accommodation to all KGFC members for 2022

*Please note: camping on Sunday 2nd May - Presentation Night- is NOT FREE- please pay all fees.*

*Unpowered is \$13.50 per person - \$33 for powered sites for 1-2 people*

Accommodation available at **Wirib Tourist Park**;

Units, family rooms and caravan/camping facilities.

Booking inquiries—08 8975 0602

**Fuel available** at;

- Timber Creek BP Service Station
- Supermarket

Both have EFTPOS, Ice and grocery items.

**Meals available** at;

Timber Creek Hotel will be providing evening meals on Friday and Saturday nights at a small cost

—BYO Alcohol



## NOMINATION AND COMPETITION BAG COLLECTION

Competitors who wish to camp on the river will still need to confirm their registration etc.

Committee members can be contacted at Timber Creek Hotel on Friday 29th April from 3:00pm.

All competitors will require a camera with SD or DS Memory Card or means of taking photos of catch. Competitors can use their phones or other electronic devices.

Brag mats will NOT be available before 3:00pm Friday 29th April.

Proof of catch to be handed in by 6:00pm Saturday 30th April(for Mystery Length Prize) and all photos in by 5:00pm Sunday 1st May.

*Note: Delays may occur due to congestion at the boat ramp so please consider this when calculating your return after fishing.*

### Nomination Forms can be left at;

- Rod & Rifle Tackle World
- Katherine Camping & Fishing
- Betta Electrical
- Town & Country Butchers



### Nomination forms can be emailed to:

[katherinegamefishingclub@gmail.com](mailto:katherinegamefishingclub@gmail.com)



## MAJOR & SENIOR PRIZE CATEGORIES

### 1. Champion Angler

2. Longest Barra Overall Adult
3. Longest Barramundi (Female)
4. Longest Barramundi (Male)
5. Longest Jewfish
6. Longest Salmon
7. Longest Catfish

**\$4000**

## JUNIOR & PODDY MULLET PRIZE CATEGORIES

7. Longest Barramundi— Poddy Mullet (Male)
8. Longest Barramundi— Poddy Mullet (Female)
9. Longest Barramundi— Junior (Male)
10. Longest Barramundi— Junior (Female)
11. Longest Salmon— Poddy Mullet
12. Longest Salmon— Junior
13. Longest Jewfish— Poddy Mullet
14. Longest Jewfish— Junior
15. Longest Catfish— Poddy Mullet
16. Longest Catfish— Junior
17. Longest Mullet— Poddy Mullet

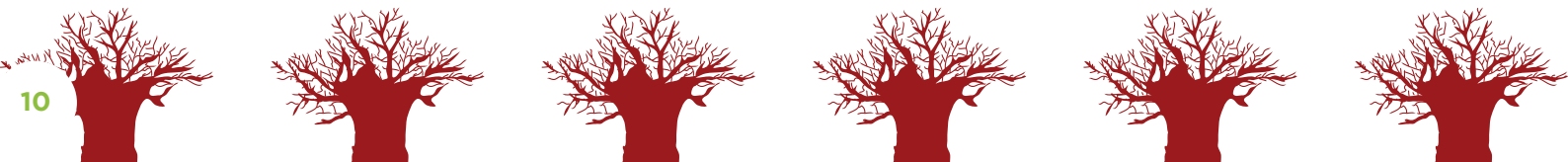


## MISCELLANEOUS PRIZE CATEGORIES

19. KGFC Lure Biggest Barramundi
20. Best Team of up to 3 Anglers
21. Best Team of up to 5+ Anglers
22. Mystery Length Barramundi—Saturday
23. Mystery Length Barramundi—Sunday
24. Best Dressed Team/Boat (on the water)
25. Most Creative Team Name
26. Hard Luck Story
27. Lucky Door Prize
28. Best Picture Taken (for the weekend)\*
29. Smallest Barramundi Caught on Line
30. Metery Mug Prize - Metre Barra Caught (for the weekend)
31. #Crocwise Photo Comp - please see details on page 18

**\*Entries for these categories can be emailed to the KGFC email account.  
Please list prize category, team name and/or angler name in the subject title.**

***[katherinegamefishingclub@gmail.com](mailto:katherinegamefishingclub@gmail.com)***

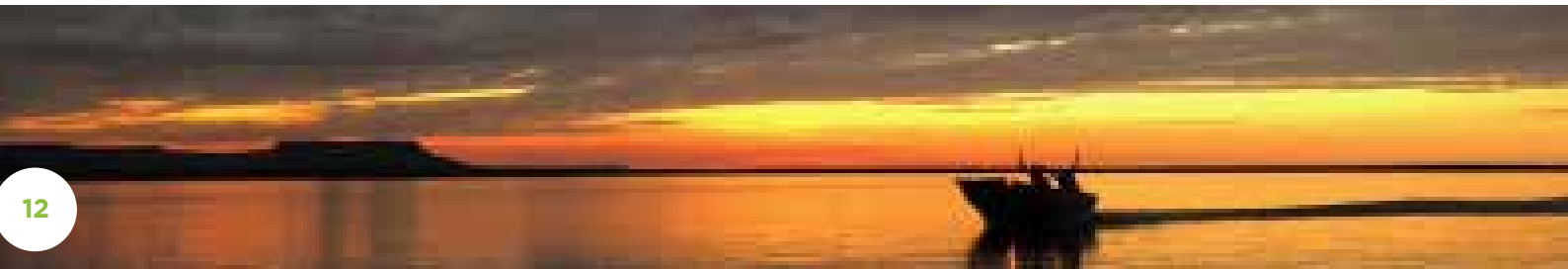


## COMPETITION & FISHING RULES

- All competition fish accepted will be Catch & Release ONLY
- Fish must be legally released to be eligible for entry into any category of competition.
- Digital photos with date and fish on official Brag Mat with individual lanyard ID placed on fish ONLY accepted for competition prizes.
- Photos only accepted from 6:00pm until 7:00pm on Saturday and 3:00pm until 5:00pm on Sunday during competition.
- Facilities provided by KGFC Big Horse Creek Barra Classic committee for SD/DS memory cards ONLY. Any other memory card will require appropriate card reader.
- Mobile phone photos will **ONLY** be accepted if verified by authorised KGFC Big Horse Creek Barra Classic Weigh Master and that the photo is of a fish with the official yearly Brag Mat and individual lanyard.
- All competitors to supply their own camera or means to take photo of catch.
- Only the below fish species will be eligible for entry into any category in competition;
  - Barramundi
  - Jewfish
  - Salmon
  - Catfish
  - Mullet (Juniors & Poddy Mullet ONLY)
- **NO** set lines or nets are to be used by competitors to catch competition fish. Competitor's lines are to be attended to at all times.

## COMPETITION & FISHING RULES Cont.

- Score sheets are to be filled in correctly, signed and presented with SD/DS memory cards or electronic device between times allocated for each day or may not be accepted.
- Anglers may **ONLY** fish with a maximum of 2 lines at a time, these can be of any combination.
- Fish shall **NOT** be gaffed then recorded and released.
- Score Sheets with photos can be lodged on Sunday of the competition for both days of the competition. But **WILL NOT** be eligible for the Saturday Mystery Length category.
- Score sheet with photos for Saturdays Mystery Length must be presented to official committee on Saturday or will not be accepted for that category.
- KGFC Lure biggest fish prize is a fun and honest prize where a photo as evidence is to show the lure attached to the fish in the water and another photo to show the length. There will need to be a witness also.
- ALL competition fishing will cease at 3pm Sunday. Committee member will be available from 3pm Sunday to accept photos
- Teams with day use of the boat ramp get priority parking at the boat ramp!!!
- River campers are kindly asked that they consider those accessing the boat ramp daily by parking their vehicle away from the boat ramp towards the highway.





## COMPETITION & FISHING RULES CONT.

- Team events are judged on fish species and point system, as below;  
(can be a combination of all these fish species)
  - Barramundi
  - Jewfish
  - Salmon
  - Catfish
- To be eligible for the Team Fishing categories fishing must be carried out in the same location e.g. same boat or land area—cannot be split up into different areas/boats.
- Teams can consist of a combination of male and female, and or Junior competitors.
- Lanyard card must be presented when handing in photos and catch sheet.
- Winners of each category DO NOT have to be present at the presentation evening to collect their prizes. Please ensure contact details are on registration forms.
- KGFC Big Horse Barra Classic weigh master's decision is final. Any protests are to be in writing and to be presented to weigh master within 1/2 hour of close on Sunday. A protest fee of \$100 will be payable to lodge a protest.
- KGFC Big Horse Barra Classic committee members and or KGFC members WILL NOT be responsible or liable for loss of damages to cameras and or photographic equipment during KGFC Big Horse Barra Classic competition.
- Any competitor found not abiding by competition and fishing rules will be disqualified from competition with no refund of entry fees.
- Honesty is required by parents in that Poddy Mullets and Juniors catch their own fish and are not entering fish caught by parents or other team members.

## FISHING TIMES

Lines IN

Saturday 30th April

6:00am

Lines OUT

Sunday 1st May

3:00pm

**ALL FISHING WILL CEASE AT  
3PM SUNDAY 1ST MAY**

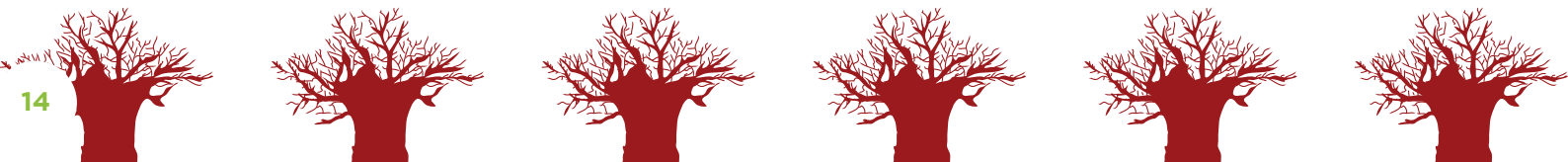
## COMPETITION AREA

The competition area is between **SALTWATER YARDS** above Timber Creek and down to **LOBBY CREEK**.  
The **BAINES** (East & West Junction) and **ANGALARRIE RIVERS** may also be fished.

*Note: Delays may occur due to congestion at boat ramp so please consider this when calculating your return after close of fishing, especially at the close of competition on Sunday.*

## PLEASE REMEMBER

Late presentation of photos will NOT be accepted.  
It is each competitor's responsibility to ensure that they cease fishing in time to present their photos.





*With special  
thanks to our*

**PREMIER Sponsor**



With special thanks to our Sponsors...

## MAJOR Sponsors



Locally owned, operated and supporting the local community since 1986, Mac's Hire Service offers the following:

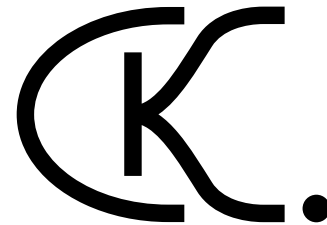
Hire, sale and service of industrial equipment including excavators, loaders, access equipment, compaction and concrete cutting equipment, trailers, compressors, generators. In-house workshop to cover business and client needs.

Industrial supplies – a comprehensive range of industrial supplies including safety and PPE, signage, bolts and nuts, bearings and associated components, lifting equipment, welding equipment and consumables, abrasives, cutting and drilling equipment, concrete tools and machinery is held in stock.

Sales and servicing of fire extinguishers and associated equipment.

Agent for Coregas industrial gasses and Kleenheat LP gas.

Computerized embroidery service. We have 2 computerized embroidery machines located in-house. A large range of work and safety clothing, sports apparel, hats and caps, safety footwear, PPE etc is kept in stock.



DK GRAZING COMPANY

DK GRAZING COMPANY is a family operated pastoral business managing over 1200sq km from the Roper district to the Top End and 2 pre export quarantine facilities at Adelaide River.





**Established in 1985,  
Rowlands Quarries is Katherine's  
best choice for quarry products  
in the Northern Territory.**

**TURNING BIG ROCKS INTO  
LITTLE ROCKS SINCE 1985**

## **Top End Rural Supplies**

Locally owned and operated business serving Katherine and surrounding districts for more than 30 years.

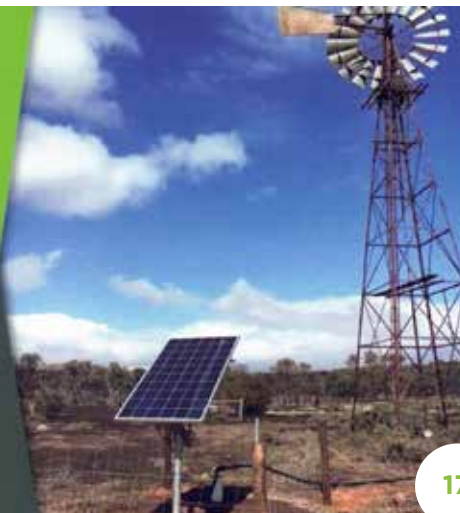
Experts in water delivery solutions including bores, pumps, design, sprinkler systems and irrigation fittings pipe and hose.

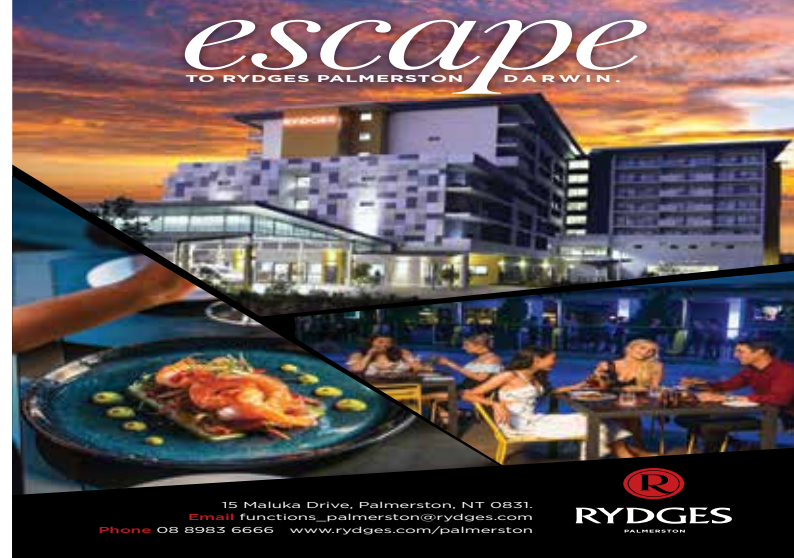
Proudly supported by Grundfos Pumps, Norma, Netafim, Hunter and Nelson.

## **Top End Rural Supplies**

*"...your specialist  
in water  
equipment..."*

Ph: (08) 8972 2522  
Email: [toprural@bigpond.com](mailto:toprural@bigpond.com)





15 Maluka Drive, Palmerston, NT 0831.  
Email [functions\\_palmerston@rydges.com](mailto:functions_palmerston@rydges.com)  
Phone 08 8983 6666 [www.rydges.com/palmerston](http://www.rydges.com/palmerston)



## WIN a Yeti Tundra 45 hard cooler

Send photos to  
[katherinegamefishingclub@gmail.com](mailto:katherinegamefishingclub@gmail.com)

**Best photo of a crocodile or best crocwise  
behaviour photo wins a be crocwise yeti esky.  
Crocwise behaviour for example:**

- Standing 5 metres back from the waters edge
- Your camp on the bank should be 50 + metres from the waters edge
- Landing your Barra with a fishing net
- Arms and legs in the boat at all times
- No lure is worth your life
- Don't let your mate be bait
- If you hook a croc, cut the line
- Don't invite crocs in. Gut fish away from the waters edge. Dispose of dead bait in bins.  
Don't leave dead bait on boat ramps or banks.
- Remember you are in croc country. Crocs can kill.





Phone: (08) 8972 2211 | [www.auspnf.com.au](http://www.auspnf.com.au)

- Building Repairs & Maintenance
- Electrical & Air Conditioning Contractors
- Plumbing & Drainage
- Powerline Construction & Maintenance
- Community Essential Services

#### OFFICE LOCATIONS

- Katherine
- Timber Creek
- Baraloola
- Lajamanu
- Kalkarindji
- Barunga
- Yarralin
- Pine Creek
- Pigeon Hole
- Robinson River
- Elliott
- Alice Springs
- Utopia



TERRITORY PLASTERING & INTERIORS



TERRITORY PLASTERING & INTERIORS

Territory Plastering & Interiors is a locally owned and operated plastering business in Katherine, specialising in residential, repairs and commercial projects.

Our team is made up of qualified plasterers with over 15 years experience in framing, plasterboard partitions, suspended ceilings and acoustic tiles.





# NT'S #1

## Mercury Outboard Dealer

Boat Packages

New Trailers

Mercury Outboards



3+3  
**6 YEARS**  
WARRANTY



# Reidy's

## FISHING LURES









The Katherine Club is located close to the town centre and offers air-conditioned comfort, live entertainment most weekends, monster raffles and the coldest beer in the town!



Fishing and Outdoor World is the longest established specialist fishing and tackle outlet in Darwin operating since 1972.

The business was initially known as Stringer's Fishing and Outdoor World when two fishing mates, Col Stringer and George Voukolos decided to open a specialist fishing and tackle store.

# GOLD Sponsors



KATHERINESOLAR





Bronte Evans  
Chartered Accountants





## SILVER SPONSORS

Comley's Carpet Care & Cleaning Service  
Onsite Refrigeration & Airconditioning  
Vanderfield/RDO Equipment  
E.E. Muir & Sons Pty Ltd  
Elders Real Estate  
Goodwood Painting Service  
Rod Usher Contracting  
Chris Pest Control  
NT Tilling  
Katherine Laundry  
Tuff Tyres Katherine  
Scatts Plumbing

Duits Electrical  
JAMB Mechanical  
Zip Print  
Top End Water Storage  
Katherine Fresh Fruit & Veg  
Katherine Mitre 10  
Duratec Australia  
Greg & Darilyn Wright  
Katherine Sports & Family Chrio  
Tradelink  
Ray White Livestock

## BRONZE SPONSORS

Brumby's Bakery Katherine  
Katherine Office Supplies  
Katherine Ice

Kelly Spraying  
NT Technology  
Katherine Lock and Key

*Katherine Game Fishing Club would like to warmly thank our sponsors.  
Without you this wonderful family event would not be possible.*



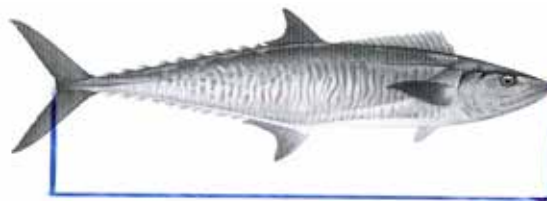
## PHOTOGRAPHING FISH

- All scoring fish caught during this competition will need to be photographed on the **2022 measuring mat** provided, with individual lanyard laid on top of the fish so that competitor name is clear.
- Species with a paddle tail (Barramundi Jewfish) measure from the head of measuring board to end of tail.
- Species with a fork tail (Salmon) measure from the head of measuring board to the centre of fork tail.
- **NOTE:** the fish head must be in contact with the end of the measuring board and the mouth closed. Photographs must be taken from directly above the fishes head and showing the whole fish on the board in the one photograph.

**For the competition the 2022 Brag Mat and individual lanyard must be clearly visible in the photograph.** Failure to photograph fish to requirements will likely make that capture disallowed.

## HINTS FOR BETTER PHOTOS

Place the whole fish in a sunny position – not half in sun & half in shade.  
Ensure the angle of the shot has no bright reflections from the fish.



All competitors  
are reminded that  
Marine Safety  
and Timber  
Creek Police will  
be on the water  
checking boats.

# SAFETY EQUIPMENT TABLE

## MINIMUM SAFETY EQUIPMENT REQUIREMENTS ON BOARD

	Inland waters	Intermediate waters	Open waters
 One approved personal flotation device for each person on board	✓	✓	✓
 One anchor fitted with not less than 3 metres of chain shackled between the anchor and rope of not less than 50 metres overall length	✓	✓ (Two if vessel is over 10 metres in length)	✓ (Two if vessel is over 10 metres in length)
 Two paddles or oars fitted with rowlocks for all vessels under 5 metres in length unless fitted with an auxiliary means of propulsion	✓	✓	✓
 One bailer (fitted with lanyard) or bilge pump. A bilge pump is required for all vessels with covered bilges.	✓	✓	✓
 Fresh drinking water in a leak proof container (two litres for each person on board)	✓	✓	✓
 One waterproof torch	✓	✓	✓
 Two red flares	–	✓	✓
 Two orange smoke signals	–	✓	✓
 One V distress sheet	–	✓	✓
 Portable fire extinguisher (one if the vessel is between 5 and 10 metres in length / two if the vessel is over 10 metres in length. Not required for vessels under 5 metres.)	–	✓	✓
 Two 9L buckets with lanyards for vessels over 10 metres in length	–	✓	✓
 One compass or operational GPS	–	–	✓
 Electronic or paper chart for the area of intended operation	–	–	✓
 One lifebuoy (for vessels over 10 metres)	–	–	✓
 One registered EPIRB	–	–	✓

### Categories of Water

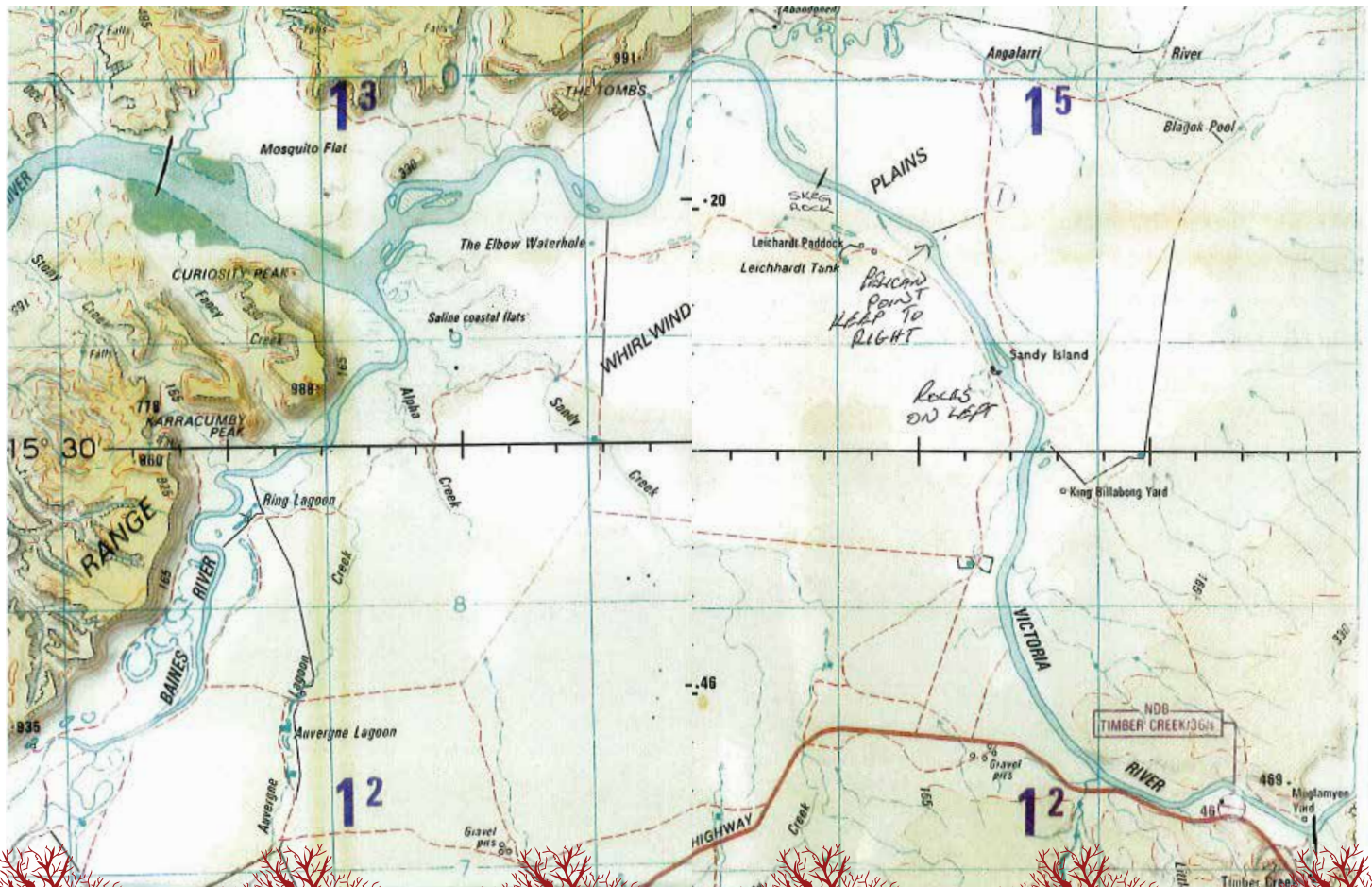
**Inland Waters** - Non tidal rivers, lakes, dams and billabongs.

**Intermediate Waters** - All tidal rivers, declared sheltered waters areas and all other coastal waters up to 2 nautical miles from the coastline.

**Open Waters** - Means beyond intermediate waters.

For further information phone  
Marine Safety Branch on 8924 7100













**KGFC Juniors having fun!!**









**Blast from the past 2019**





# **Blast from the past**

## **Kids fishing fun day 2018**







**Blast from the past 2017**



## **Katherine Game Fishing Club Annual Membership: 1st Feb – 31st Jan**

Benefits include:

- A chance to compete for great monthly prizes via the online Facebook Competitions - prizes awarded for the most notable catch:  
Male catch/Female catch/Junior/  
Katherine River catch.
- Invite to KGFC Xmas Party
- Invite to Junior Fishing Development Day
- 10% Discount at Local Katherine/Timber Creek businesses when showing your membership card

**Adults: \$20.00**

**Junior/Poddy Mullets: \$10.00**

Proudly Printed by **Zip Print**



Tel: (08) 8947 0179